

MONTHLY MEMBERSHIP PROGRESS REPORT

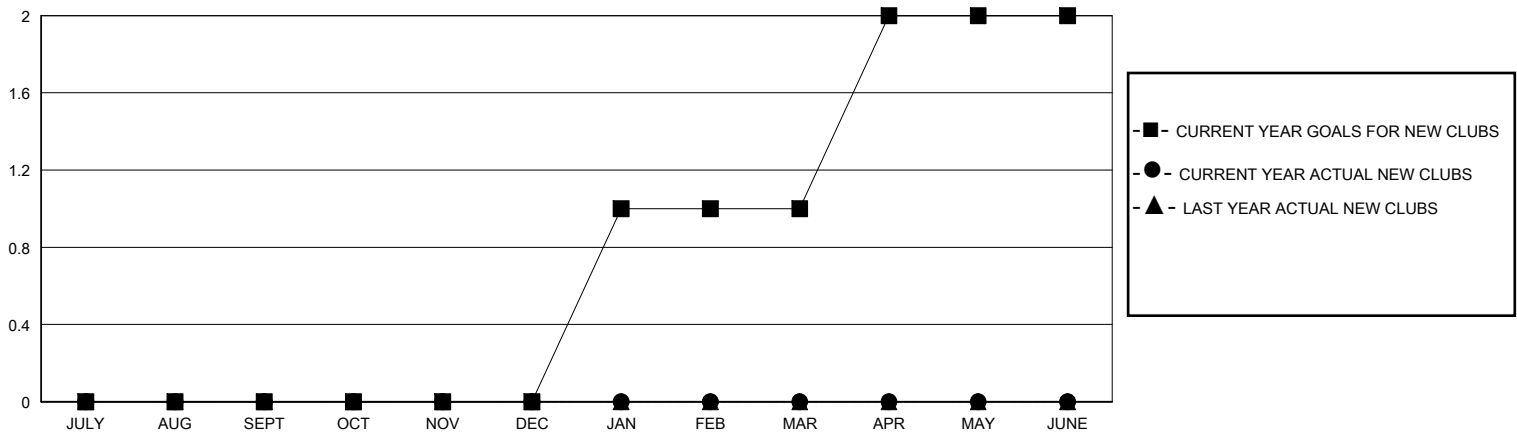
District 16 N

Results as of: 5/31/2025

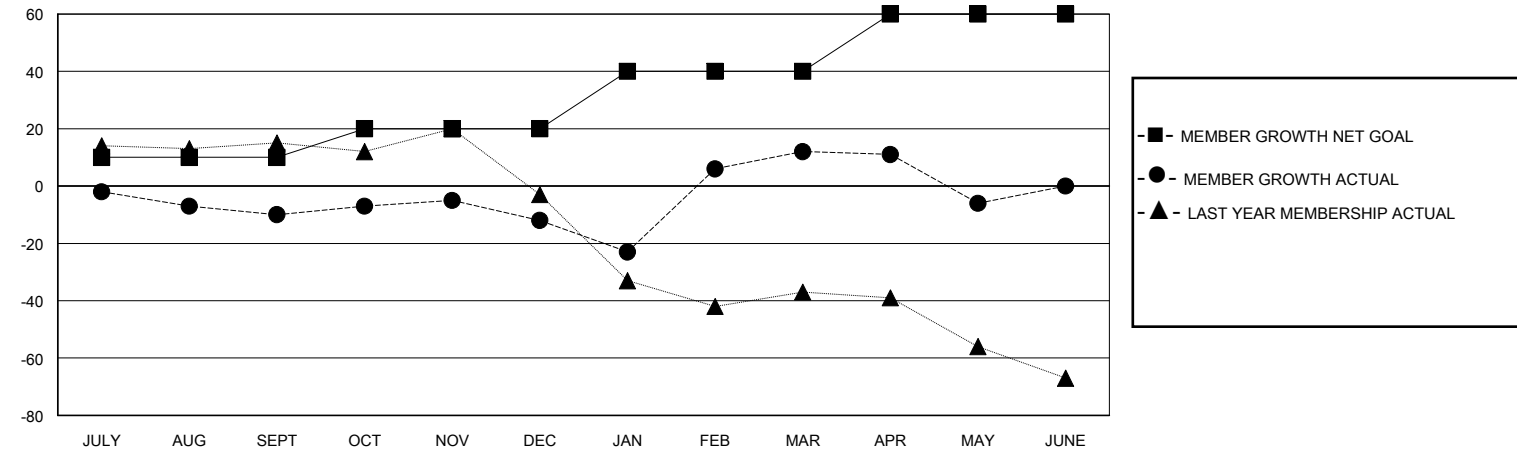
GMT: LOCATION NEW JERSEY GMT CA

Clubs				Members			
RESULTS FOR 2024-2025				RESULTS FOR 2024-2025			
QUARTER	NEW CLUB GOAL	NEW CLUBS	DROPPED CLUBS	QUARTER	MEMBER GROWTH NET GOAL	MEMBER GROWTH ACTUAL	DROPPED MEMBERS ACTUAL (including transfers)
JULY/AUG/SEPT	0	0	0	JULY/AUG/SEPT	10	27	32
OCT/NOV/DEC	0	0	0	OCT/NOV/DEC	10	18	19
JAN/FEB/MAR	1	0	0	JAN/FEB/MAR	20	42	36
APR/MAY/JUNE	1	0	1	APR/MAY/JUNE	20	19	34

GOALS AND ACTUAL NEW CLUBS CUMULATIVE



GOALS AND ACTUAL MEMBERS CUMULATIVE



DROPPED CLUBS: 1	24 CLUBS OF 50 ADDED 1 OR MORE NEW MEMBERS	<u>GENDER DISTRIBUTION</u> MALE 738 (64.68%) FEMALE 401 (35.14%)
<u>DROPPED MEMBERS</u> DECEASED 9 CLUB CANCELLED 9 OTHER 113 TOTAL 131	CLICK HERE FOR CUMULATIVE MEMBERSHIP DATA	TOTAL FAMILY UNIT MEMBERS 181 FAMILY MEMBERS PAYING HALF DUES 95